

Sri panwa

PHUKET



"It Was The Ideal Mix Of Glamour & Relaxed Fun, Private Moments & Partying, Good Food & Great Company."
- Kendal Hill (Australian Gourmet Traveller)

Located at the Southeastern tip of Phuket, Sri panwa is a highly regarded property in Thailand, offering stunning views from its perch atop Cape Panwa. It is a luxurious oasis of tranquility in one of the most sought-after locations in Phuket, as it occupies the entire cape. The property has received numerous accolades, including being named Best Resort Hotel in Thailand by Lonely Planet and having its Baba Nest recognized as one of the top three best beach bars in the world by CNNGo.

Adding to its portfolio of luxurious accommodations is Yaya, which is the latest addition. This structure comprises two convention halls that can accommodate up to 400 people, as well as 24 pool suites designed in the Sri panwa's distinctive style of contemporary tropical interiors and terra cotta exteriors. Yaya blends seamlessly into its surroundings with its bright and airy cream and blue building, which offers 360° views of the Andaman Sea. Additionally, Yaya has a rooftop that houses TU, an extension of its award-winning sister Baba Nest on the same property. With its unparalleled luxury and facilities, Yaya is poised to redefine the events market in Phuket.

HOTEL FACILITIES & SERVICES

- 5 Restaurants, 3 Bars & 1 Cafe
- In Room/Villa Dining
- Sri panwa Shop
- Car Parking Area
- Rooftop Wedding & Event Space
- Gym & Studio Room
- Villa Assistant Service
- Private Luxury Transfer
- Private Beach Access
- Cool Spa
- Beach Activities
- 24hr Reception & Security
- Meeting & Event Spaces

SUITE & VILLA FEATURES

Private infinity - edge pool, oversized bathtub, safety deposit box, private terrace, in - suite / villa minibar, Automatic coffee machine, daily snacks, Bose or Samsung sound system with an iPod or iPad filled with Sri panwa curated playlists, Wi-Fi and welcome tropical Fruit tray.

SUITES & VILLAS

YAYA

- Yaya Pool Suite (78 sq.m.)
- Yaya Pool Suite Ocean (78 sq.m.)

THE HABITA

- Ocean View Pool Suite (West) (70 sq.m.)
- Ocean View Penthouse (140 sq.m.)

BABA POOLCLUB

- Ocean View Pool Suite (East) (90.5 sq.m.)

POOL VILLA

- 1BR Luxury Residential Pool Villa (150 sq.m.)
- 1 - 2BR Luxury Pool Villa (260 - 320 sq.m.)
- 3 - 5BR Residence Villa (900 - 2,300 sq.m.)

BABA DINING

BABA Q

Sri panwa's very own Baba Q presents a stylish menu of contemporary Thai and international cuisine in a relaxed setting of intricate architectural detail and undisturbed, panoramic ocean views.

BABA IKI

Created by highly-trained sushi, teppanyaki and yakitori chefs, this spirited restaurant features sumptuous plates that are focused on the freshest ingredients and authentic flavors from Japan. Come for the omakase, stay for the IKI, which is adapted from a popular term among Japanese meaning...drink!

BABA CHINO

Baba Chino features a blend of innovative and modern traditional Chinese dishes infused with creativity and flair, using only fresh premium ingredients and seasonal produce, as well as a selection of custom house cocktails.

BABA HOT BOX

Our home for smoky BBQ and grilled selections. Enjoy an à la carte menu of mouth-watering feed, which our chef carefully prepares just how you like it. Choose your own meats, seafood, sauces and sides, with specialty marinades and premium meats prepared on a Josper grill at Baba Hotbox.

BABA SOUL FOOD

Baba Soul Food serves up a delicious selection of home-cooked Thai food in a cozy, relaxed setting of intricate architectural detail and undisturbed, panoramic ocean views.

BABA NEST

The World's most stylish and exclusive rooftop bar serves cocktails and small bites alongside the sexiest sunset sessions. Baba Nest's wrap-around infinity pool surrounds the rooftop deck offering 360° panoramic views of the surrounding islands, the Andaman Sea and Phuket's southeastern peninsula. Easily one of the most iconic sunset experiences out there.

BABA SOUL CAFE

Tucked within Baba Soul Food, take a seat inside Baba Soul Café for a casual daytime snack with an anything-but-boring menu. From scrumptious cakes to perfectly prepared specialty coffees, smoothies and Italian-style sodas, this is the place for a long lunch or afternoon tea into golden hour spent catching up with friends. A relaxed ambiance and intricate design with ocean views all encapsulate the Sri Panwa experience. So slow down and take a sip; café culture has arrived to Cape Panwa.

TU

TU is an extraordinary venue for weddings and events. With panoramic views of the Andaman Sea, it offers a dreamlike setting for ceremonies and celebrations. TU provides an unforgettable backdrop for cherished memories. It's not just for weddings; TU is also ideal for social functions, wellness activities, and artistic performances. Let TU elevate your special moments to new heights.



OUR SERVICES

COOL SPA

Unwind and escape with a cossetting spa break at our swanky Cool Spa, offering a seductive spa journey with treatments ranging from traditional Thai and Swedish massages to aromatherapy elevated by a unique touch of Asian techniques.

ROOFTOP WEDDINGS & EVENT SPACES

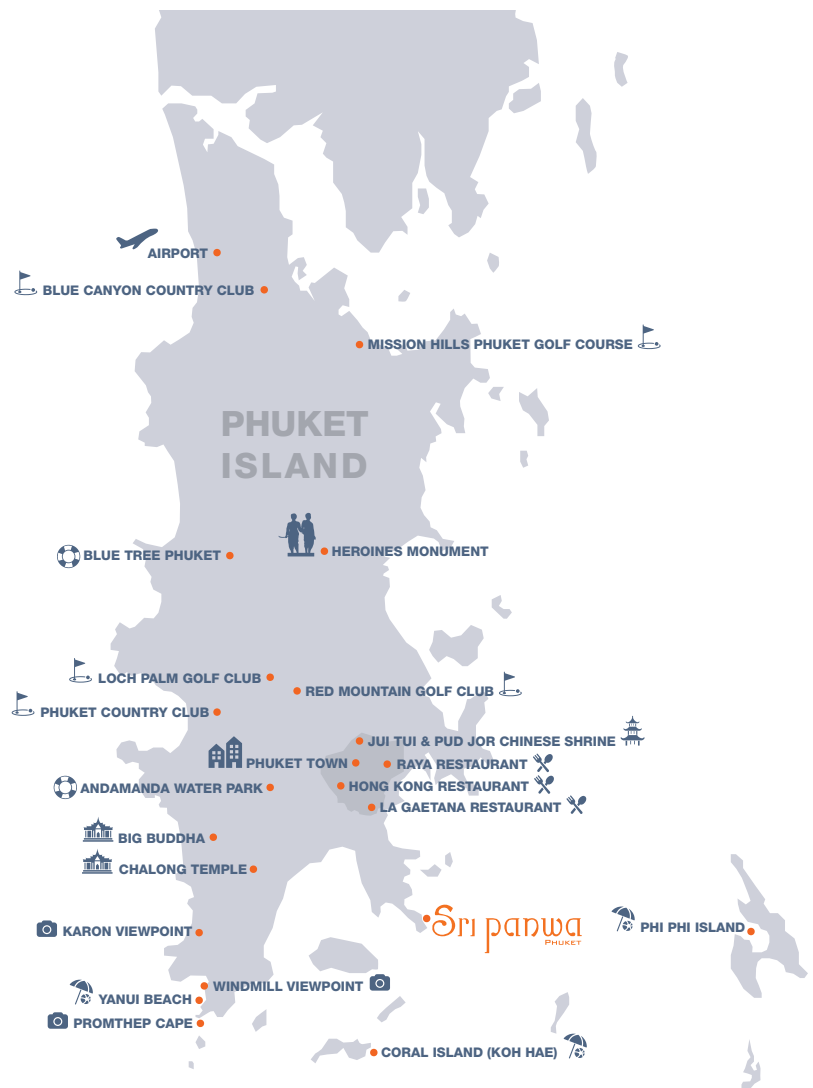
Imaging beginning your lifelong journey together by exchanging your vows at Sri panwa. Perched atop Cape Panwa, this property is located in one of the world's most desirable destinations. Baba Nest, situated on this property, offers a spectacular platform in the clouds that provides unobstructed panoramic views of the Andaman Sea in all directions. It also captures the tranquil serenity of the surrounding ocean and jungle. As one of the top-rated rooftop sunset bars globally, a luxury wedding at Baba Nest will undoubtedly be the talk of the town for years to come.

MEETINGS & FUNCTION SPACES

When hosting memorable events, look no further than Sri panwa. Our venues offer unparalleled flexibility, with the ability to accommodate events of all sizes and styles. From the moment your guests arrive, our team will provide exceptional service and a truly unforgettable experience that will make your event the talk of the town.

LOCATION

Located in the southeast of Phuket, Sri panwa is perched high atop Cape Panwa and commands breathtaking views of the Andaman Sea. Only 45 minutes away from Phuket International Airport, the location is ideal for quick access to Phuket's most famous attractions, such as Phuket Old Town and Phrom Thep Cape. With the sea in every direction, island hopping starts at our doorstep.





BABA SPACE I & II

MEETINGS & EVENTS

TOTAL EVENT SPACES	LARGEST ROOM SETUP	FUNCTION VENUES	GUEST ROOMS & POOL VILLAS
2,840 Sq.m.	400 Sq.m.	8	61 / 60

FEATURES

- Function Space
- Flexible Layouts
- AV Equipment
- Stage (Installed / Portable)
- Chandeliered Ballroom
- Stand Up bar
- Digital Signage*
- Microphone & Speaker Device
- Floor - to - Ceiling Glass Windows
- Divisible Rooms
- Projector Screens / LED Screens
- Video Conferencing
- Natural Daylight
- Customized Menus
- Video Surveillance

MEETING SERVICE

- Complimentary WiFi
- AV Technician
- Electrician
- Air - Conditioning

CATERING

- Full & Half Day Meeting Package
- Refreshment Break
- Reception
- Breakfast / Lunch / Dinner

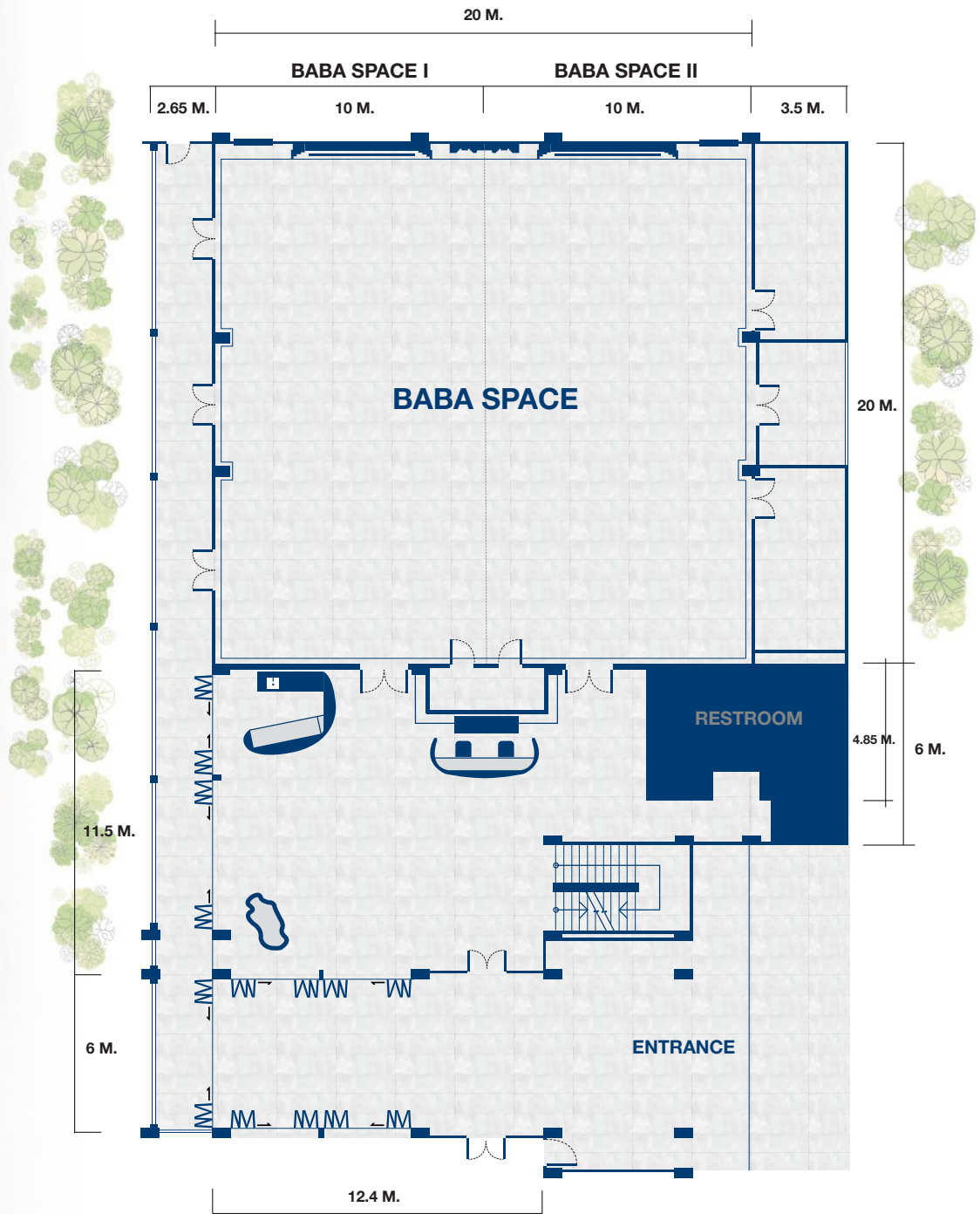


BABA SPACE III



BABA SPACE IV

FLOOR PLAN



FACT SHEET - CONFERENCE SPACES

CONFERENCE SPACES	DIMENSIONS (L x W x H) m.	AREA (SQ. M)	THEATRE	CLASSROOM	HOLLOW SQUARE	U-SHAPE	RECEPTION/COCKTAIL	BANQUET
BABA SPACE 1 & 2	20 X 20 X 5	400	300	280	80	60	400	240
BABA SPACE 1	20 X 10 X 5	200	150	140	40	30	160	120
BABA SPACE 2	20 X 10 X 5	200	150	140	40	30	160	120
BABA SPACE 3	18 X 6 X 3	108	60	40	20	20	60	40
BABA SPACE 4	12 X 6 X 3	72	40	24	20	20	40	30
BABA NEST	10 X 4.5	80	80	-	-	-	120	-
BABA SUNSET LOUNGE	8 X 5.5 X 2.6	80	50	-	-	-	120	40
BABA POOLCLUB	40 X 30	1000	-	-	-	-	120	120
TU BAR	50 X 40	1100	240	-	-	-	240	60